



NEW YORK eHEALTH
COLLABORATIVE



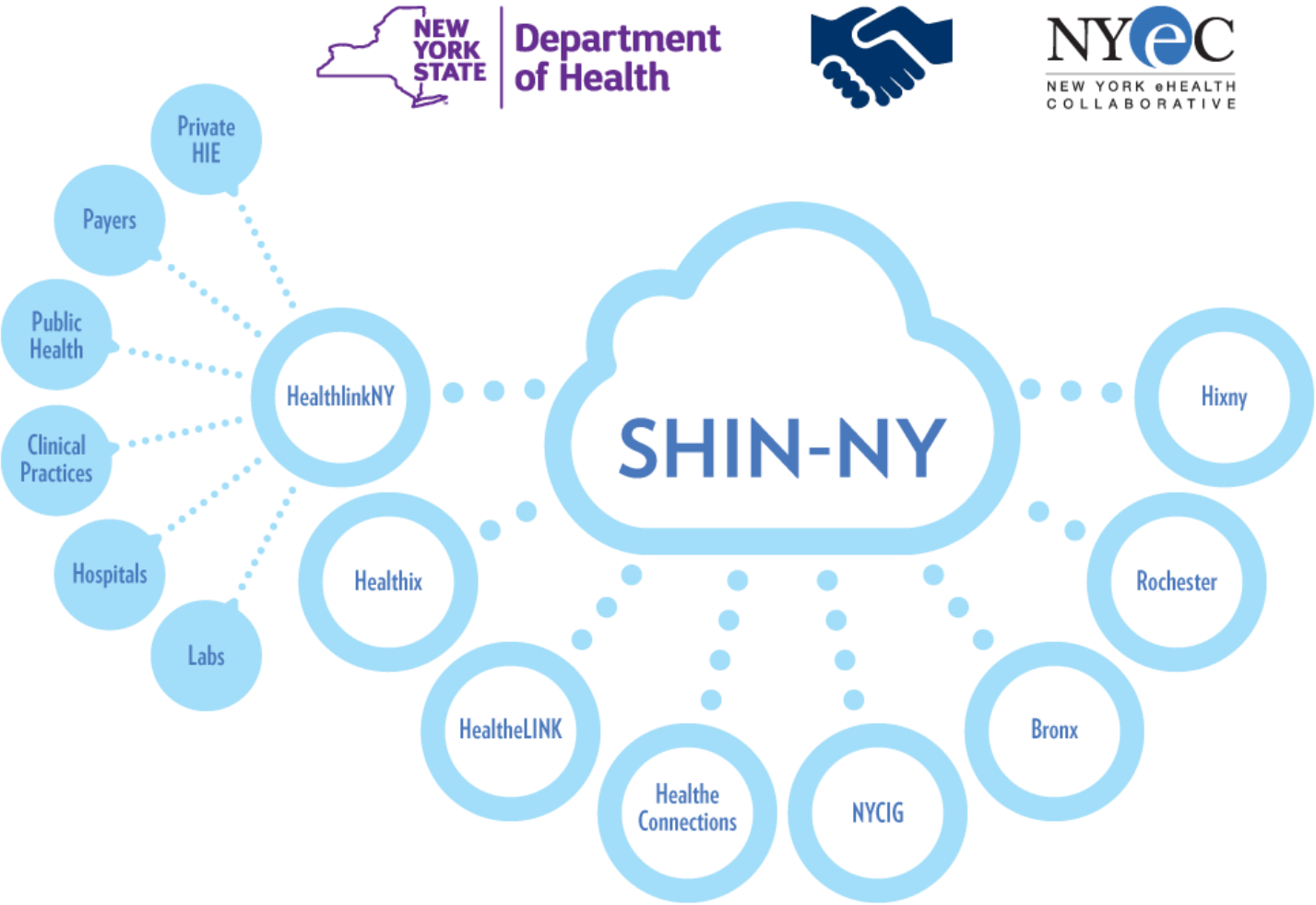
New York Association of Psychiatric Rehabilitation Services SHIN-NY Overview and Update

Valerie Grey

April 27, 2017

What is the Statewide Health Information Network New York?

A Network of Networks – The Health Information Exchange (HIE) Ecosystem

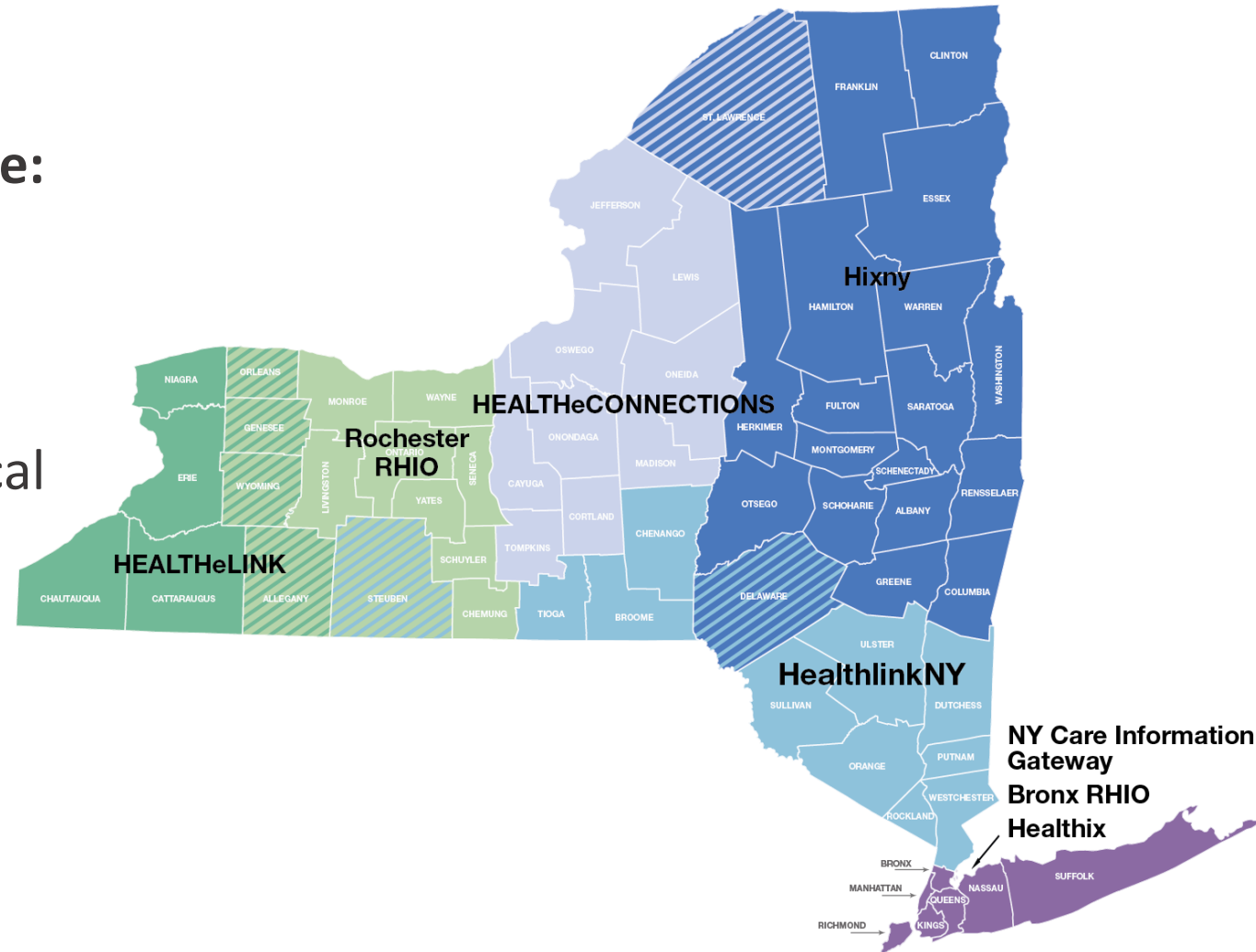


8 Qualified Entities (QEs) Throughout the State

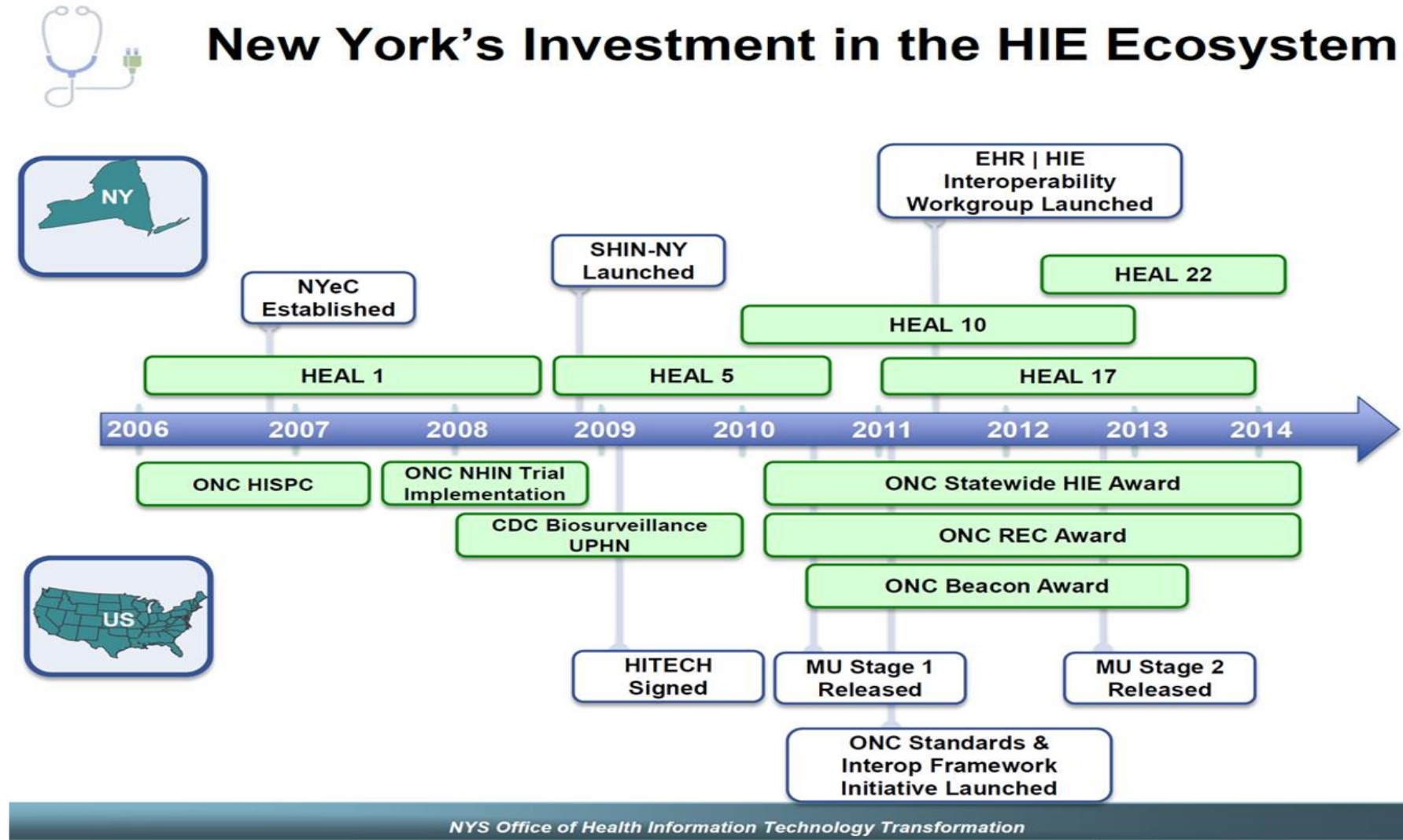
Qualified Entities Core Services (funded by government) include:

- Secure messaging
- Notifications & alerts
- Results delivery
- Patient record lookup & clinical viewer
- Consent management
- Public health access

QEs offer different value-added services (for a charge)



The History (About a Decade) with SHIN-NY and NYeC



Strong Governance & Oversight

SHIN-NY Regulation Adopted March 2016

10 NYCRR Part 300

Detailed policy guidance



- Hospitals with certified EHRs were required to connect by 3/9/17
- Health care facilities* with certified EHRs required to connect by 3/9/18
- Other providers should consider connecting given all the benefits to their patients, their practices, and vital role in VBC



QEs must go through rigorous review to obtain certification

* ambulatory surgery centers, diagnostic and treatment centers, clinics, nursing homes, home care services agencies, hospices, health maintenance organizations that are health care providers, and shared health facilities.

Why Do We Need SHIN-NY & NYeC?

Patients are Mobile & EHRs are Not Interoperable



QE	% of Patients Overlapping other QEs
HEALTHeLINK	13
Rochester	12
HealthConnections	20
Hixny	11
HealthlinkNY	32
Bronx	40
Healthix	13
NYCIG	53

Statewide Patient Record Lookup Implemented in 2015 & Working

Allows QEs to query and get important clinical information from other QEs to share with providers

Cross QE Alerts

Being fully implemented in 2017

Allows QEs to receive, without querying, important clinical information from other QEs to share with providers

Who is Hooked up to the SHIN-NY?



97% of FQHC

98% of Hospitals

81% of Public Health Departments

55% of Long-Term Care Facilities

47% of Home Care Agencies*

57% of Physicians

All data above as of March 18, 2017 ... Data continuously being updated, improved, & refined

Provider Assistance

DEIP

- Building EHR interfaces to NYS RHIOs to support data quality in the SHIN-NY
- \$10k or more in incentives for connecting to a RHIO

BHIT

- Adult BH-HCBS provider organizations will receive payment assistance & technical support for adopting a BHIT qualified EHR / EBS & up to 2 yrs. of user licensing fees
- Those with a qualified system receive technical support & upgrade at no cost and up to two years of user licensing fees

How is SHIN-NY being used?



OVER 3.5 MILLION
alerts delivered to clinicians
(e.g. emergency room visit, inpatient discharge)



ALMOST 5 MILLION
patient record retrievals

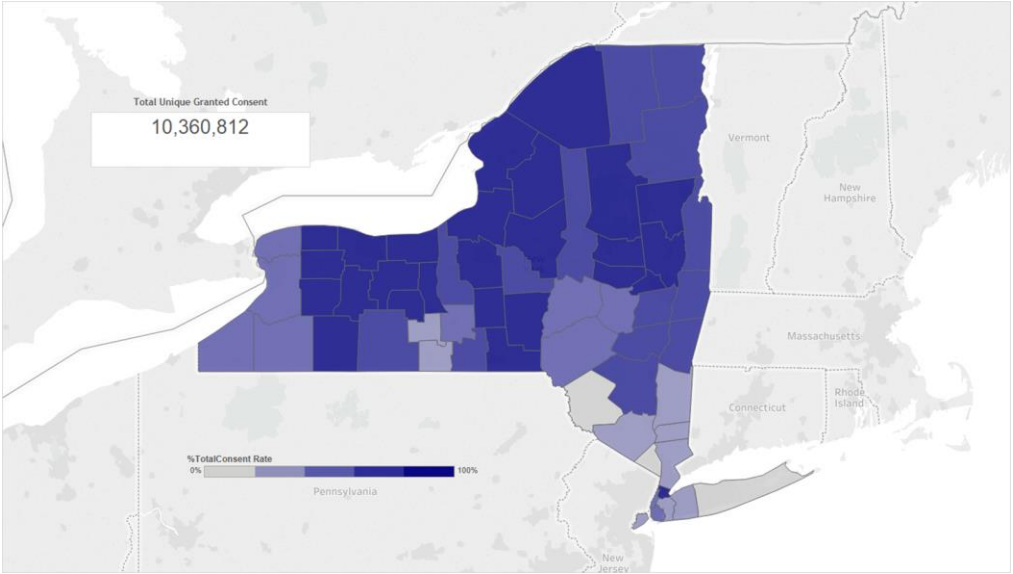
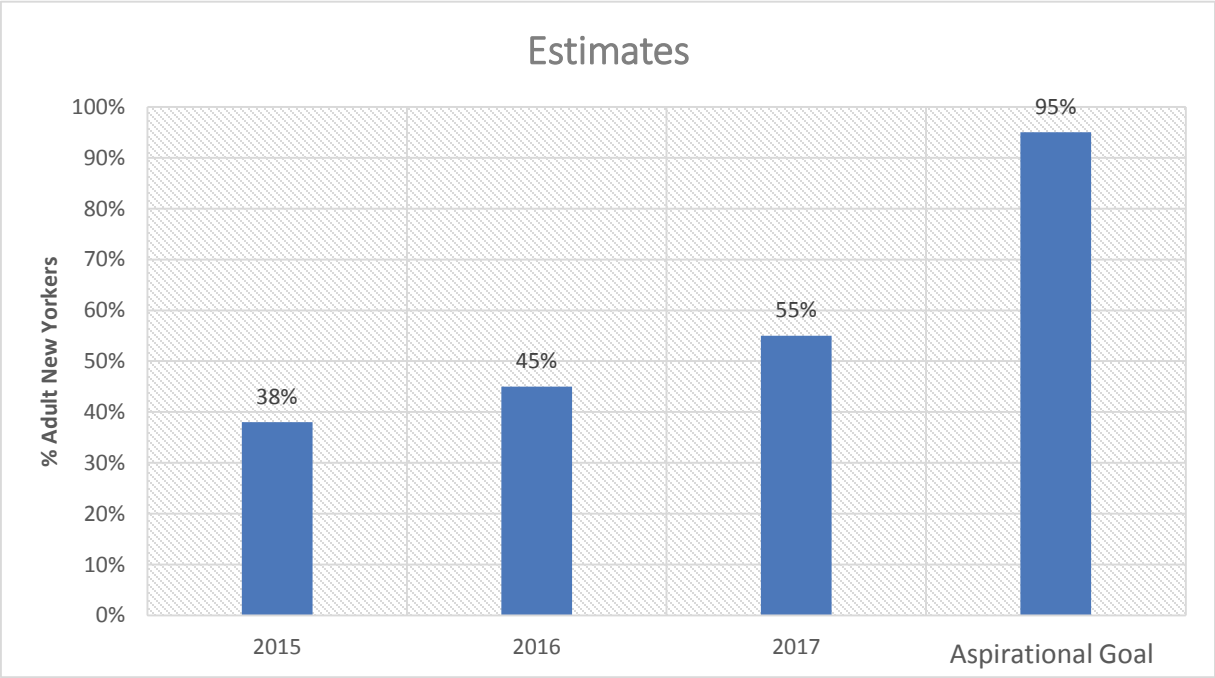


OVER 20 MILLION
diagnostic and
lab results delivered

Core Services in Past Year

Consent in New York State

Percent of Total New Yorkers with Unique Consents



Updated NYS Consent total as of March 31, 2017

Note: Percentage shown is of the adult population of New York State (>18 years old) in 2016. This is approximately 15,618,300 adults out of 19,770,000 total living resident populations.

The numerators for each year have been adjusted to account for deceased residents with consent records, and residents that have moved out of state. The Statewide Master Patient Index was used as a guide to determine potential overlap for consented patients, and was used for deduplication. Methods used are approximate, are subject to change upon additional analysis.

Vision & Mission

SHIN-NY

Our mission is to improve healthcare through the exchange of health information whenever and wherever needed

Shared Vision

Our vision is a dramatically transformed healthcare system where health information exchange is universally used as a tool to make lives better

NYeC

Our mission is to improve healthcare by collaboratively leading, connecting, and integrating health information exchange across the State

What Is The SHIN-NY Value Proposition?

<http://www.nyehealth.org/shin-ny/value-of-hie/>



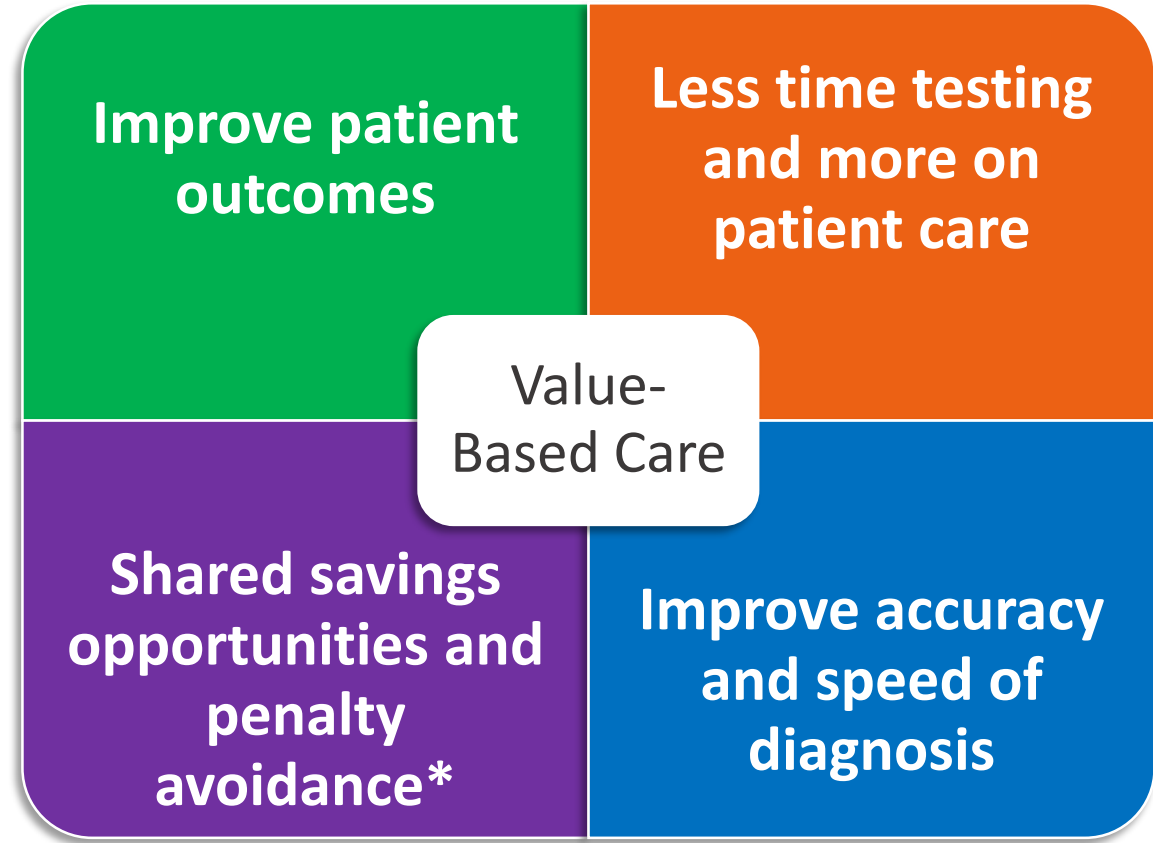
Hospitalization Event Notifications and Reductions in Readmissions of Medicare Fee-for-Service Beneficiaries in the Bronx, New York

Journal of the American Medical Informatics Association
October 7, 2016



An Empirical Analysis of the Financial Benefits of Health Information Exchange in Emergency Departments

Journal of the American Medical Informatics Association
June 27, 2015



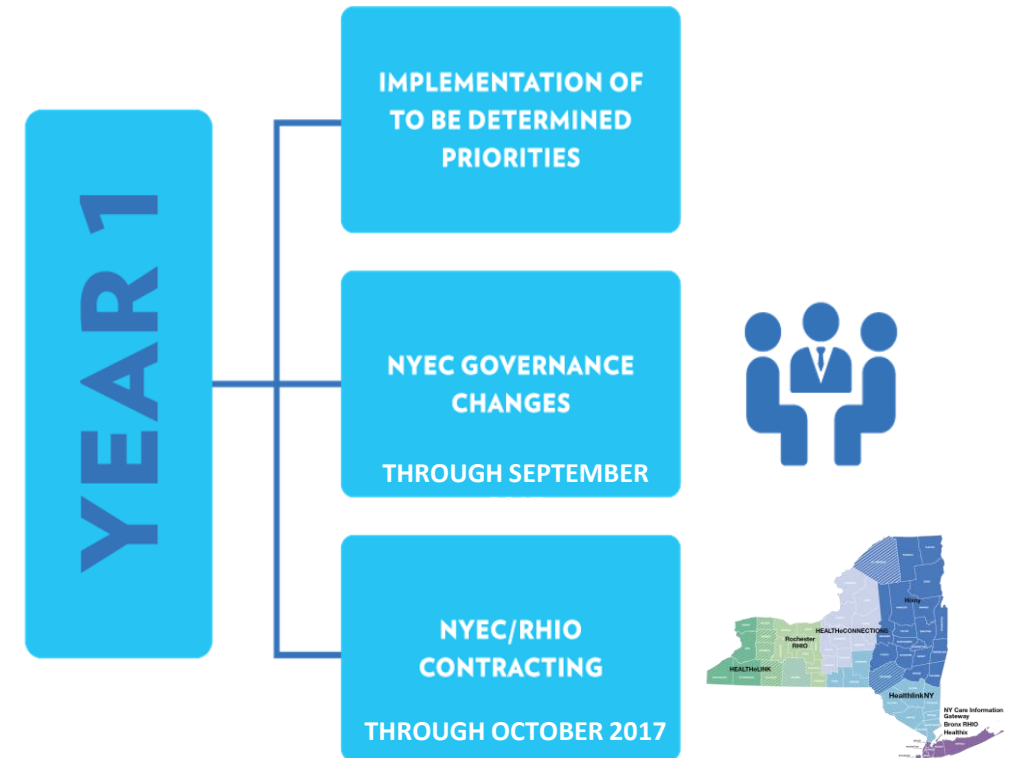
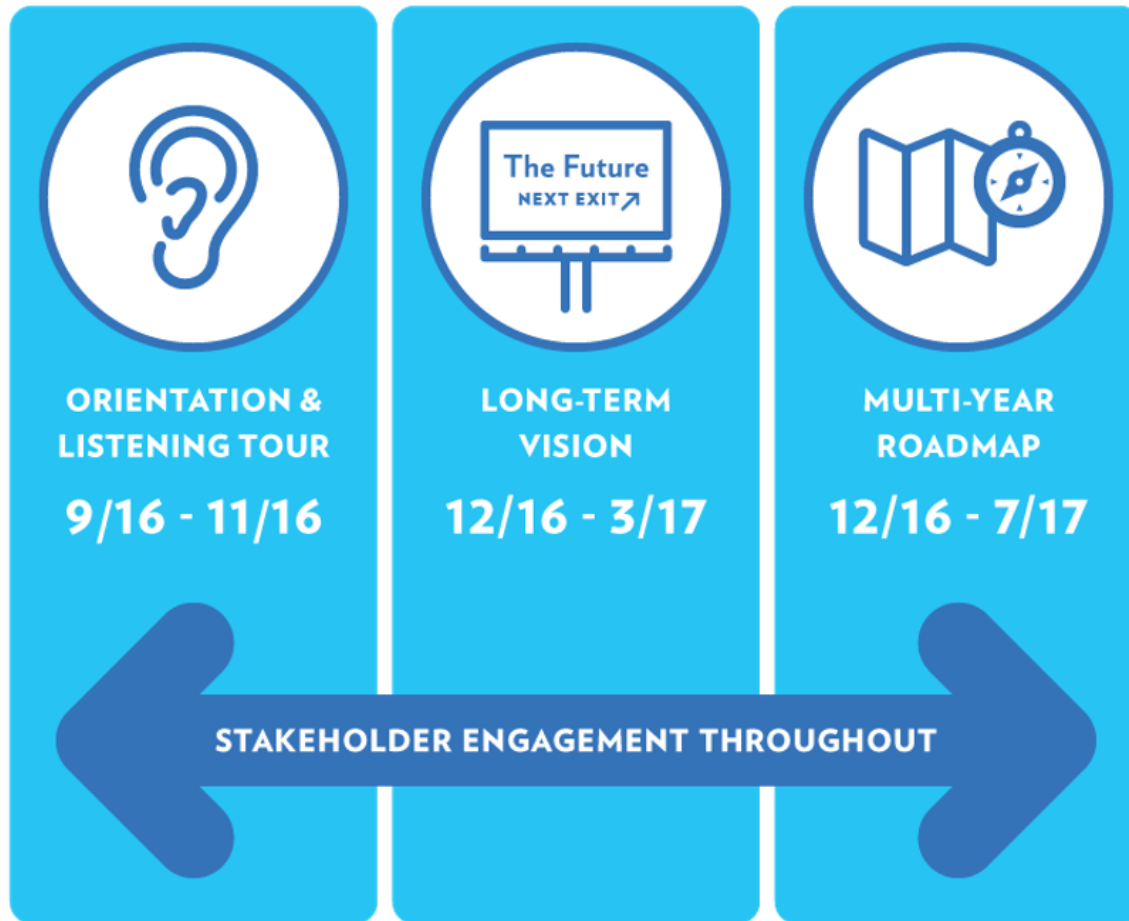
*SHIN-NY is a critical tool for health homes and VBC under DSRIP, MACRA, ACP, and others and can directly and indirectly help avoid penalties under MIPS

How Can SHIN-NY Help With DSRIP?

- 2.a.i: Create an Integrated Delivery System Focused on Evidence-Based Medicine / Population Health Management
 - Requirements include partners hook up to QE/RHIO
- 2.b.iv: Care Transitions Intervention Model to Reduce 30-Day Readmissions of Chronic Health Conditions
- 2.b.ix: Implementation of Observational Programs in Hospitals
- 3.b.i: Cardiovascular Health Evidence-Based Strategies for Disease Management in High-Risk / Affected Populations



Strategic Planning



What Are We Hearing Providers Want?

Simplicity &
ease of use
(SSO)

Speedy
relevant
information

Better quality &
complete data

“Search –
ability”

Finish the
basics

Information
that goes
across borders

Alignment &
Standardization

Easy reporting
Output that
matters

EHR integration

Highest
privacy &
security

Consent
policy changes

Help
educating
patients

What Are The SHIN-NY Long-Term Objectives?

**Optimize
Maximum
Potential**

**Integrate SDOH
and other Data
& Ensure Access**

Sustainability

Future Considerations & Trends



Data Quality Assurance

Patient Engagement & Customer Needs

Quality Reporting

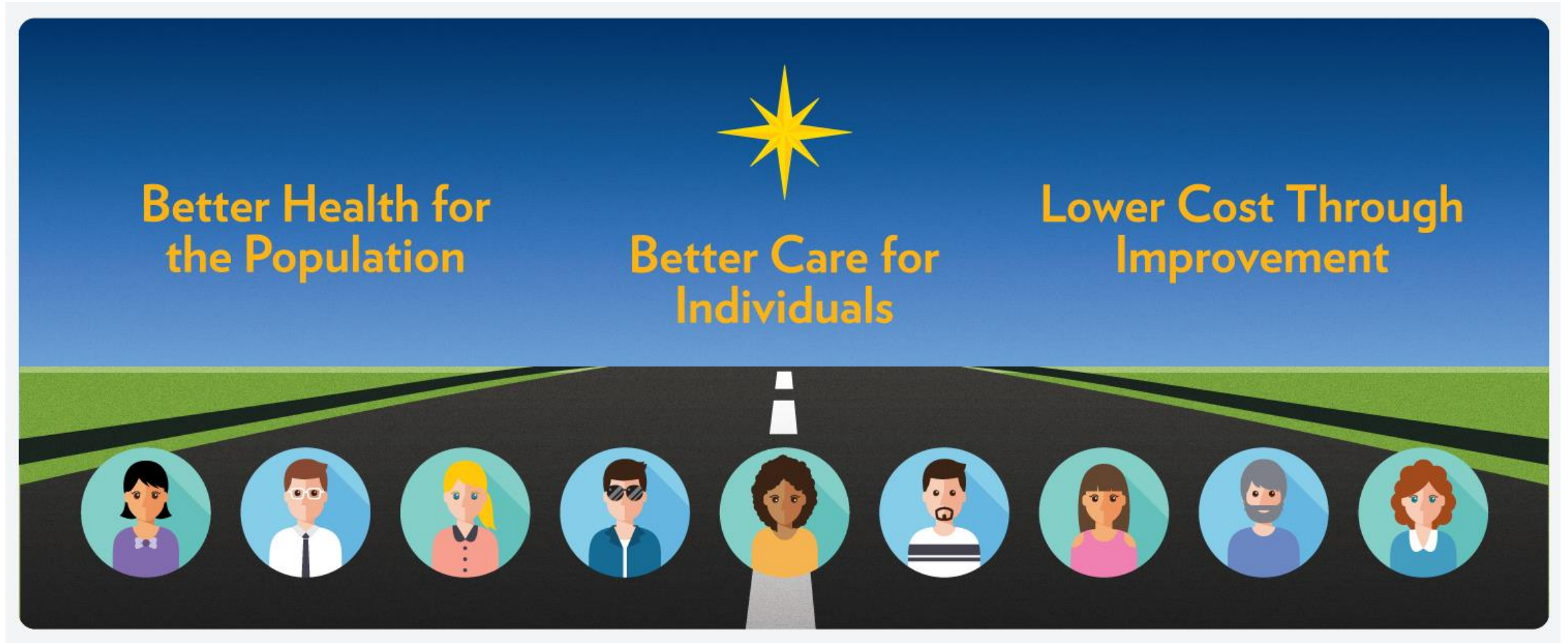
All Payer Database

Social Determinants of Health

Population Health



The Road Ahead



QE Contact Information

Bronx RHIO (Greater NYC)	Charles Scaglione, Executive Director	csaglio@bronxrhio.org
Rochester RHIO (Rochester & Finger Lakes Region)	Jill Eisenstein, Executive Director	jeisenstein@grrhio.org
HealtheConnections (Central New York Region)	Rob Hack, President and CEO	rhack@healtheconnections.com
HEALTHeLINK (Western New York Region)	Dan Porreca, Executive Director	dporreca@wnyhealthelink.com
Healthix (Greater NYC & Long Island)	Tom Check, President and CEO	tcheck@Healthix.org
HealthlinkNY (Southern Tier Region)	Christina Galanis, President and CEO	cgalanis@healthlinkny.com
Hixny (Capital Region)	Mark McKinney, CEO	mmckinney@hixny.org
New York Care Information Gateway (Greater NYC Area & Long Island)	Nick VanDuyne, Executive Director	nick.vanduyne@nycig.org



NEW YORK eHEALTH
COLLABORATIVE

nyehealth.org

STAY CONNECTED WITH NYeC

Sign up for our newsletter, follow us on Facebook and Twitter, and join our LinkedIn group.



40 Worth Street, 5th Floor New York, New York 10013
80 South Swan Street, 29th Floor Albany, New York 12210

Sharing Health Information in the VBP Arena

- ED alerts support increased network care coordination
- Improved outcomes and risk stratification
- Ability to send referrals to all providers
- Effectively manage transitions of care
- Robust consent feature to manage data sharing

